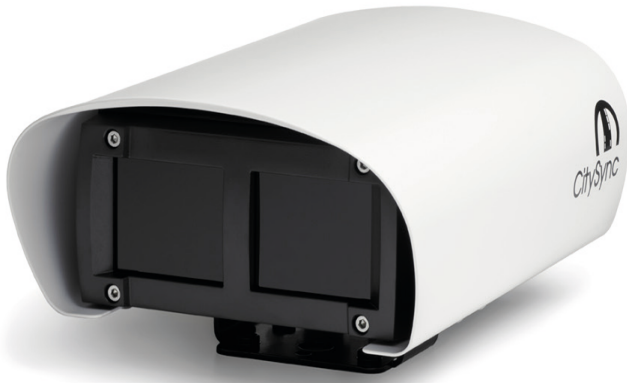


All-in-one ANPR camera for parking systems



The CitySync 50 camera is optimised for short to mid-ranged ANPR for the following applications:

- ▶ Airports security and parking
- ▶ Shopping Centres
- ▶ Barrier and access control systems
- ▶ Tolling
- ▶ Town Centre monitoring

### High quality imaging

The CitySync 50 utilises uncompressed HD video for high-accuracy ANPR in parking and access control systems. The high resolution enables capture of the most challenging plates including those with half-height and stacked characters. The CitySync 50 camera is available with 850nm illumination which allows clear and crisp licence plate images to be produced 24-hours a day.

### On-board Jet Recognition Engine

All the HD video is processed inside the camera housing by the Jet Recognition Engine, which is one of the fastest and most accurate in the world, with no need to send high bandwidth video across the network or high-powered external process PCs. The engine is supported full-time by our in-house development team.

### Highly flexible standalone or integrated

The camera has a wide-range of output options on-board without the need for any external PCs or software. After uploading a database to the device, rules can be programmed through the web-browser enabling:

- ▶ Automated access / barrier control through relay
- ▶ Email outputs
- ▶ Output of Wiegand codes
- ▶ LED sign integration
- ▶ Configurable XML output

## KEY FEATURES

- ▶ HD ANPR camera for 24/7 plate recognition
- ▶ Captures plates from 3-20 meters
- ▶ ANPR engine on-board
- ▶ Easy webpage setup
- ▶ On-board database with email and relay outputs

### JetManagementSuite software

When combined with the JetManagementSuite software, users are able to experience a complete parking management and access control system, allowing:

- ▶ Overstay analysis
- ▶ Car Park Counting
- ▶ Alarm management
- ▶ Ticketing integration
- ▶ Wiegand access control
- ▶ Relay barrier control

### Simple web-based wizard setup

Configure the camera from anywhere on the network through your web-browser in minutes thanks to the new CitySync setup wizard.

PART NO. INFORMATION	DESCRIPTION
CS-50-S-850	3-7 m range with IR
CS-50-M-850	7-14 m range with IR
CS-50-M-850-OV	7-14 m range with IR & OV
CS-50-L-850-OV	14-20 m range with IR & OV

## TECHNICAL INFORMATION

<b>Input Power</b> <small>npu</small>	24 V DC
<b>Power Consumption</b>	<25 W
<b>ANPR Range Options</b>	Various from 3 to 20 m
<b>ANPR Camera</b>	1.2MP 1/3" CMOS sensor Frame Rate: 25 fps maximum
<b>Overview Camera</b>	1.2MP 1/3" progressive scan CMOS Frame Rate: 25 fps maximum
<b>Illuminators</b>	Focused high intensity LEDs 850nm
<b>Shutter Speed</b>	1/500th - 1/20,000th second
<b>Environmental</b>	-30°C to +60° C - operating temperature IP66
<b>Dimensions and Mass</b>	80 x 165 x 200 mm (H x W x D) 3kg
<b>Processor Specifications</b>	1.46GHz Dual-Core with 2GB RAM 6GB useable storage
<b>Communications</b>	LAN (RJ45) connection, Relay Control (1 input, 2 outputs) Wiegand
<b>Brackets</b>	Various available